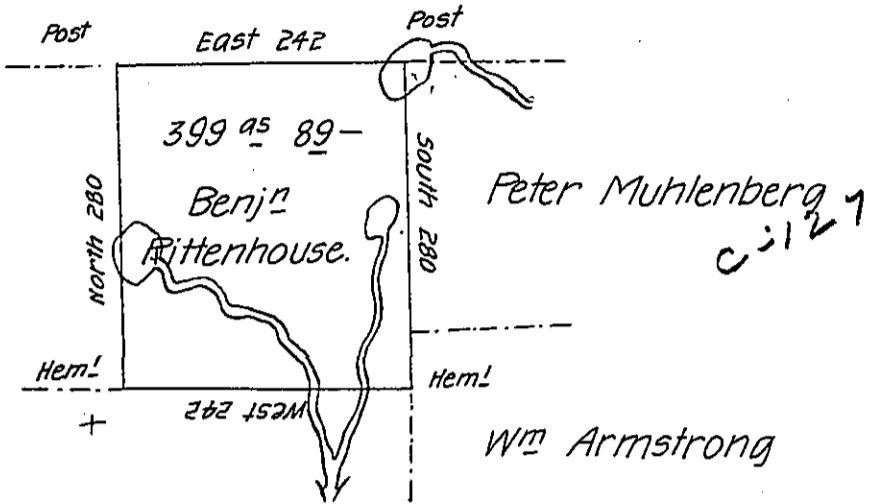


Thos Vanderslice

C 208 - 226

Charles E. White

Joshua Bean
a 222 - 261



-185'

In pursuance of a Warrant dated Jan^y 3^d 1793 Surveyed to Benjⁿ Ritterhouse Oct^r 10th 1794 the above described tract of land Situate on small branches of Tunkhanock Creek in the County of Luzerne Containing three hundred & ninety nine acres & eighty seven perches & all^e of 6 P. Ct

Ant^y Crothers D. S.

Da^l Brodhead Esq^t

Surveyor Gen^l

IN TESTIMONY that the above is a copy of the original remaining on file in the Department of Internal Affairs of Pennsylvania, made conformably to an Act of Assembly approved the 16th day of February, 1833, I have hereunto set my Hand and caused the Seal of said Department to be affixed at Harrisburg, this eleventh day of June 1906.

Loac R. Brown
Secretary of Internal Affairs.